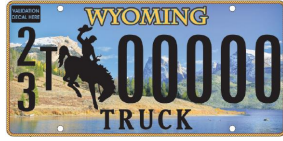


Wyoming License Plate Guide

Follow the steps below to determine how to enter your Wyoming license plate number on the “edit vehicles” page.



Example for this plate:

Step 1: Plate Design <u>1</u> <u>7</u>	Step 2: County Number or Plate Code <u>2</u> <u>3</u>	Step 3: Vehicle Type <u>T</u>	Step 4: Plate Number <u>0</u> <u>0</u> <u>0</u> <u>0</u> <u>0</u> <u>0</u>
--	---	---	--

Step 1: Plate Design

Identify your license plate design in the examples below. Place the 2-digit code of that license plate design as shown in Step 1 above.

17 = Lower Green River Lake Design



*09 = Grand Tetons Design



Wyoming DMV has discontinued this plate design, although some residents are still using it.

Step 2: County Number or Plate Code

Identify the plate code below by looking at the first symbol or digit on your license plate. Identify that symbol or digit below and place the corresponding 2-digit code as shown in Step 2 above.



NUMBER

1 = 01	5 = 05	9 = 09	13 = 13	17 = 17	21 = 21
2 = 02	6 = 06	10 = 10	14 = 14	18 = 18	22 = 22
3 = 03	7 = 07	11 = 11	15 = 15	19 = 19	23 = 23
4 = 04	8 = 08	12 = 12	16 = 16	20 = 20	

LETTER

AP = Apportioned/Commercial	NG = National Guard
AR = Amateur Radio	PH = Pearl Harbor Survivor
DV = Disabled Veteran	PR = Purple Heart
ET = EMT	PW = Former POW
FF = Firefighter	GS = Gold Star Family
CG = Coast Guard	

Step 3: Vehicle Type

Identify the type of vehicle and place the corresponding letter as shown in Step 3 above.

P = Passenger

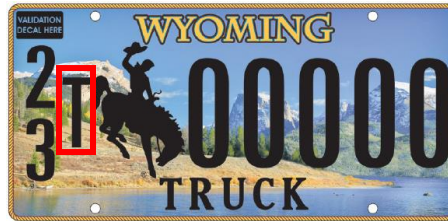
T = Truck

M = Motorcycle

C = Apportioned/Commercial Vehicle

A = University of Wyoming Alumni

W = Wheelchair Plate



Step 4: Plate Number

Identify the last four characters on your license plate and enter them as shown in Step 4 above.

